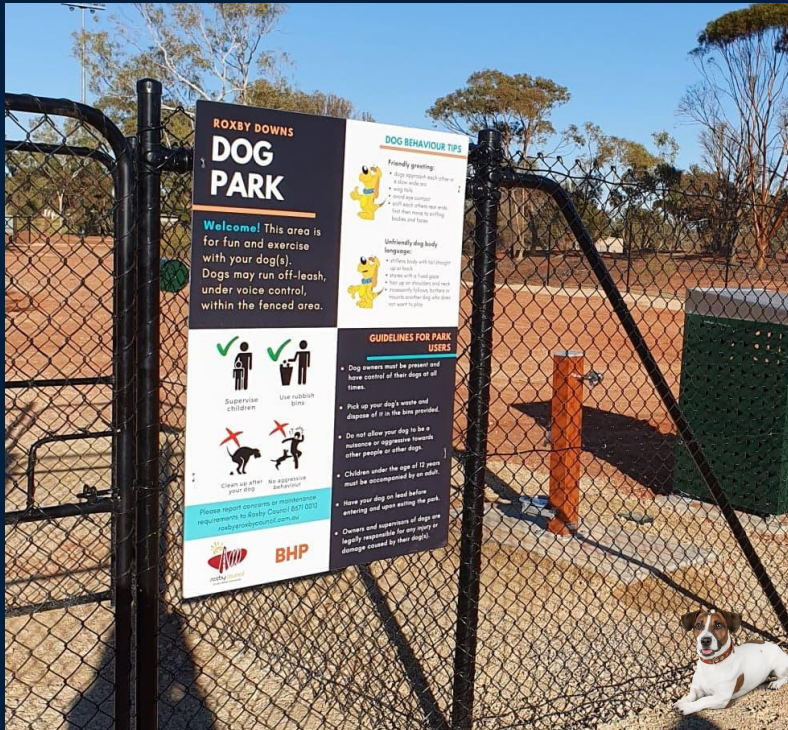
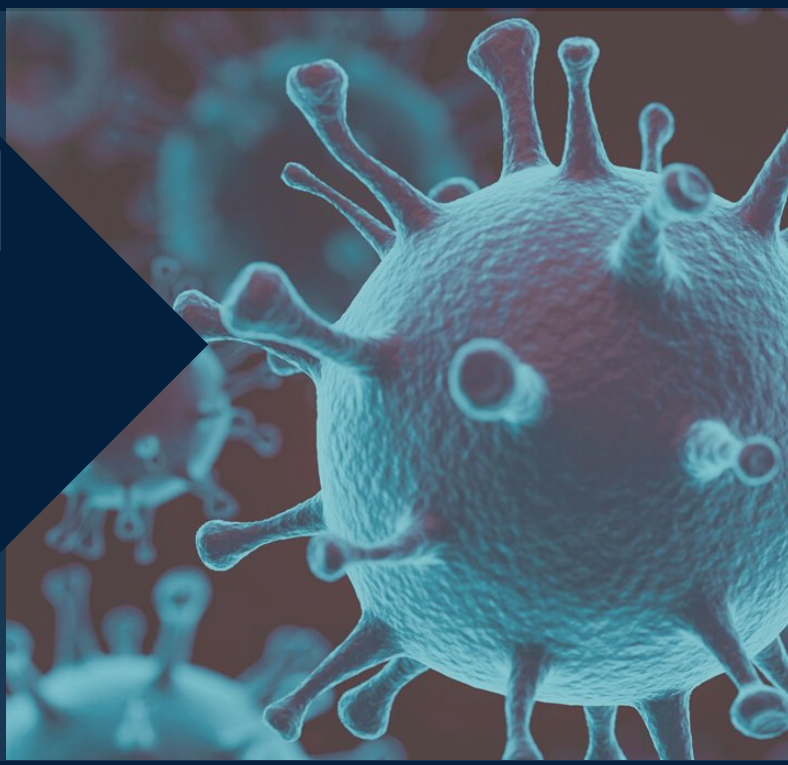




ROXBYS DOWNS COUNCIL

SIX MONTH REPORT CARD

January - June 2020



ROXBYS DOWNS DOG PARK

Welcome! This area is for fun and exercise with your dog(s). Dogs may run off-leash, under voice control, within the fenced area.

DOG BEHAVIOUR TIPS

Friendly greeting:

- Dog shouldn't reach out to a child or other dog
- Dog shouldn't jump on people or other dogs
- Dog shouldn't bark or whine
- Dog shouldn't dig or dig up other people's things
- Dog shouldn't dig up other people's things

Unfriendly dog body language:

- Staring with no blinking
- Staring with head tilted
- Staring with ears pinned back
- Staring with tail tucked
- Staring with tail up and wagging
- Staring with tail up and wagging

GUIDELINES FOR PARK USERS

- Dog owners must be present and have control of their dogs at all times.
- Pick up your dog's waste and dispose of it in the bins provided.
- Do not allow your dog to be a nuisance or aggressive towards other people or other dogs.
- Children under the age of 12 years must be accompanied by an adult.
- Have your dog on lead before entering and upon leaving the park.
- Owners and supervisors of dogs are legally responsible for any injury or damage caused by their dogs.

Please report concerns or maintenance requirements to Roxby Council 8271 0200 info@roxydowns.sa.gov.au

BHP

Welcome to the sixth edition of Roxby Council's Six Month Report Card series.

This Report Card initiative was first introduced for the July-December 2017 period. It illustrates our ongoing commitment to inform the community and other stakeholders about progress in meeting the objectives of Council's Annual Business Plan and Budget and reporting Council-initiated and/or partnered activities, programs, and events.

This edition provides a snapshot of Council highlights during the period January to June 2020.

It also reports on a number of projects that are already underway and will, as they are implemented, contribute to the economic and community wellbeing of Roxby Downs.

Many of these activities are reported upon as they happen via the Roxby Council website and the Roxby Council and Roxbylink Facebook pages. Radio segments on RoxFM (Council Catchup, Thursdays at 9am and The Vibe, Fridays at 1pm) and other radio programs broadcasting in the region are also utilised as a key way of communicating progress and achievements.

This Report Card represents a succinct and easy-to-read summary of these highlights.

We are interested in your feedback. Please feel free to provide comments and suggestions via: roxby@roxbycouncil.com.au



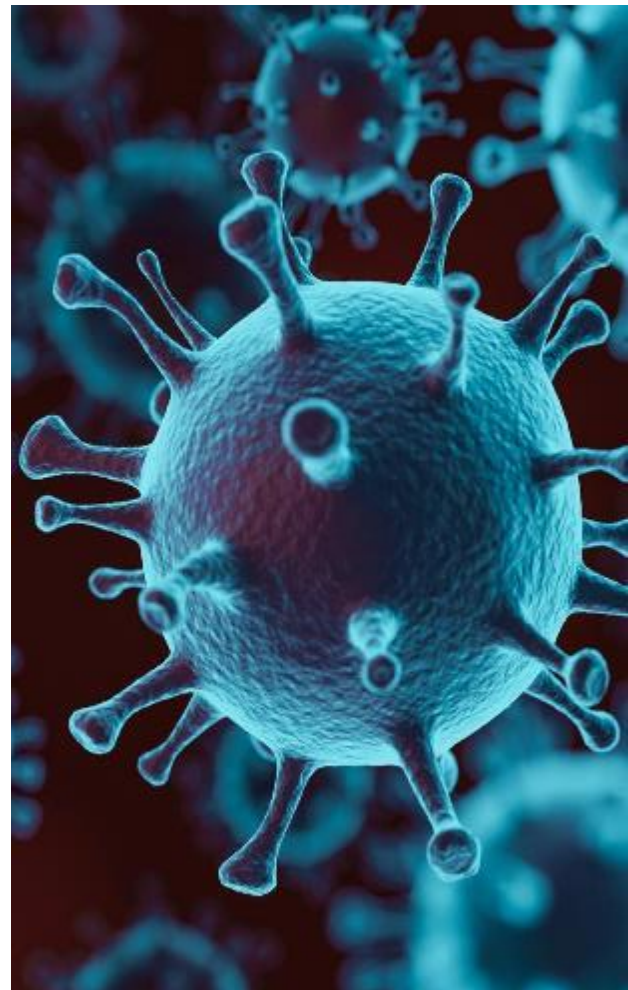
▶ A PERIOD OF UNCERTAINTY:

To date, 2020 has presented a range of unprecedented challenges.

Australia recorded its first case of Novel coronavirus (COVID-19) on 25 January 2020 and by 2 March Australia recorded its first case of community transition. The latter propelling Australia's policy response and subsequent actions which would inevitably have an immense impact upon cities, towns and communities across the country.

By late March Australia transitioned into 'shutdown mode'- social distancing, testing, quarantine and 'stop the spread' became prevalent terms. Soon Government 'spatial distancing' policies would force enormous changes to how people would go about everyday life and how industry could conduct business.

Whilst Roxby Downs has not recorded a single case of COVID-19, the local community, local business and other groups have been required to abide by Australian Government directions.



Roxby Downs – Andamooka COVID-19 Working Group:

Roy Blight, Chief Executive of Roxby Council, responded promptly convening a Roxby Downs – Andamooka COVID-19 Working Group which would meet (virtually) weekly to discuss the implications of the pandemic for our region. The first meeting taking place on 19 March 2020. Stakeholders participating in these meetings, with the Chief Executive, included members from the health services, BHP, local schools and children's services, APOMA and SAPOL. The group discussed the status of the local COVID-19 response and preparedness for pandemic impacts upon local services, facilities, and businesses.

25 JANUARY

Australia records its first case of Novel Coronavirus (COVID-19)

18 FEBRUARY

Release of the Australian Health Sector Emergency Response Plan for COVID-19

18 MARCH

Australian Prime Minister announces measures to protect communities from COVID-19.

- limits to indoor & outdoor gatherings presents impact to Council operated facilities and services

23 MARCH

Many Council operated facilities are closed

- as at 30 March Playgrounds, tennis courts and skate park closed
- Council office remains open and staffed to ensure the delivery of essential services to the community

APRIL-JUNE

Many Council operated facilities remain closed

- Library and youth centre deliver programs on line
- Dunes cafe operates as take-away only
- Council office remains open and staffed to ensure the delivery of essential services to the community

16 JUNE

Facilities start to reopen with COVIDsafe conditions in accordance with the continued advice from SA Health and directions from the SA Police Commissioner.

► HIGHLIGHTS:

Hermit Street Nature Play Playground Open:

The 2018/19 Annual Business Plan and Budget saw Council set aside \$50,000 for the redevelopment of the Hermit Street Playground. Consultation with the community revealed a strong desire for the playground to include a public toilet and fencing.

As such the 2019/20 budget saw Council commit further funds to meet this requirement.

May 7 2020 saw the Hermit Street Nature Play Playground open to the public. With a range of nature play spaces such as rocks, slides climbing elements and more the playground was a huge hit with families. The playground also includes a water fountain, public toilet and barbecue. Fully fenced it provides a safe, challenging and enjoyable play space for families.



► HIGHLIGHTS:

Emu Walk Upgrade Complete:

The Emu Walking Trail is a 3 kilometre circuit trail. The head of the trail is on Richardson Place outside the Roxby Downs Visitor Information Centre, however you can start the walking trail at any point along the circuit.

The Emu Walk winds its way around residential Roxby Downs, through the community garden, over sand dunes and through nature reserves. The trail is marked with directional markers. Along the trail you will see different species of native trees as well as a glimpse of the Olympic Dam mine.

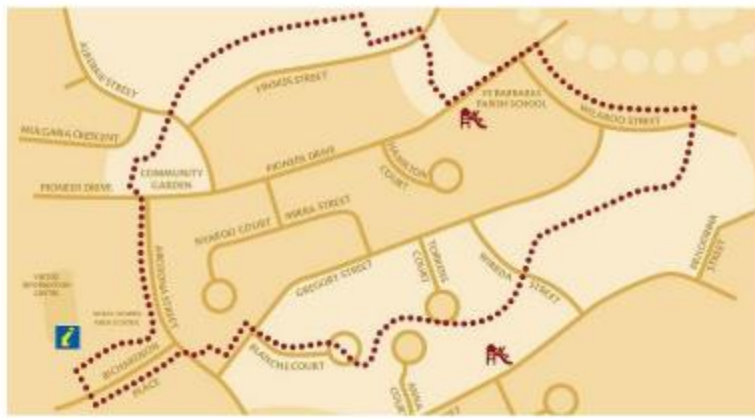
Interpretive signage is installed along the trail which includes information about local flora and fauna, the Olympic Dam Mine and Kokatha peoples.

Off-leash Dog Park Progress:

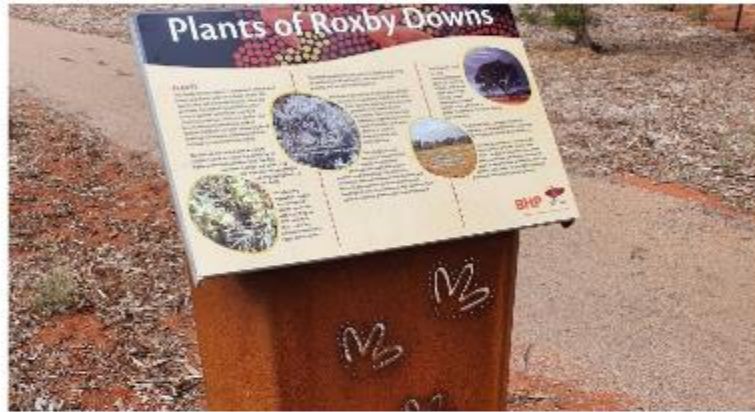
May 2019 saw Council approve (subject to BHP's consent as a landowner and community consultation) the establishment of an off leash dog park on the land located at the corner of Olympic Way and Pioneer Drive.

The development commenced early 2020 with the site prepared for fencing and a perimeter path and car parking area completed.

The remainder of 2020 will see a range of elements added to the dog park including watering station, bins and activity components such as large rocks and logs.



THE EMU WALK TRACK



INTERPRETIVE SIGNAGE - EMU WALK



DOG PARK PROGRESS



SITE OF THE OFF-LEASH DOG PARK

▶ ESSENTIAL SERVICES & ASSETS:

Richardson Place Public Toilets:

2019 saw the installation of two unisex toilets incorporating baby-change facilities. The second stage of this project was completed in June 2020 with the existing toilet block updated with cladding and refurbished with new internal fittings.

Town Entry Signs:

The 2019-20 budget set aside \$100,000 (including BHP funding \$70,000) for 3 Town Entrance Signs (1 at each of the key entry points to town). Council has worked with a Design company to produce concepts based upon the Kokatha painting depicted at the introduction of this report. The concepts have now been finalised and works now commencing on site preparations.

Asset Management System:

Council's strategic focus upon asset management and renewal was further strengthened with completion of the Phase 1 implementation.

Road Resealing and Repairs:

In the period January to June 2020 17,324m² of township road surface was resealed.

Road profiling was also completed in the light industrial area totalling 1,631m².

Resurfacing to key intersections in town including those at Olympic Way and Burgoyne St (North and South), Pioneer Drive and Arcoona Street and Pioneer and Olympic Way.

Road resurfacing and repairs are completed in accordance with an annual program in which condition assessments and traffic volumes determine the priority of roads resealed. For example, the average daily traffic volume on Olympic Way is 3356 vehicles with Pioneer Drive averaging 2139.



RICHARDSON PLACE TOILETS



ROAD PROFILING LIGHT INDUSTRIAL AREA

▶ ESSENTIAL SERVICES & ASSETS:

Roxby Water:

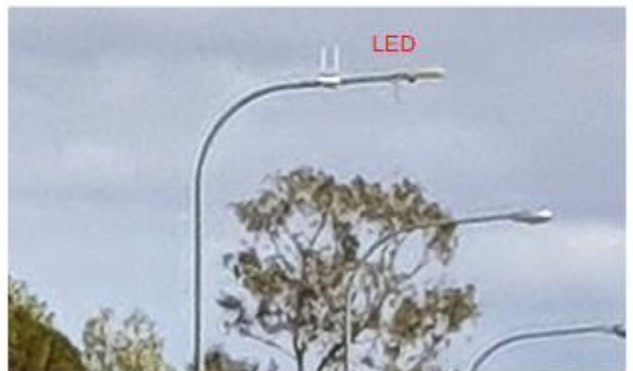
- Sewerage upgrade – The first stage of the upgrade of the transfer channels between sewer ponds was completed. The upgrade should reduce ongoing maintenance costs within the waste water recycling system.
- A new pump was installed to ensure consistent delivery of the town water supply.
- Wildlife Protection: Over the summer months native wildlife, in particular kangaroos, have been accessing the sewer treatment ponds to obtain water. Roxby Water worked to find a solution to this issue as a significant number of kangaroos were falling in the ponds unable to escape. Roxby Water installed a number of water troughs outside the fence of the sewer lagoons. The troughs are fed through a gravitational system allowing for water to be supplied from an adjacent water tank.



SOLAR WATER FEEDER (TOP)
KANGAROO WATER TROUGH

Roxby Power:

- Maintenance completed to 30% of the town service pillars – there are over 700 service and 205 section pillars in Roxby Downs. Pillars are above-ground boxes which serve as junction points for underground cables. Pillar boxes play a vital role in connecting homes and businesses to the underground electricity network.
- Street light maintenance resulted in an upgrade of 125 street lights to LED; this brings the total street light LED conversion to 350 to date (47% complete).



LED STREET LIGHT UPGRADES

LIFESTYLE AND SPORT:

Impact of COVID-19:

The COVID-19 pandemic impacted very significantly on the lifestyle and sport operations of the Roxby Downs Council. With the Roxbylink centre overseeing many of the town's sport and leisure facilities and activities a significant proportion of the January to June 2020 period saw the closure and/or restricted functioning of many such facilities and functions. All major events, functions and bookings were cancelled.

23 March 2020:

- Dunes Café – closed for in-house dining. Takeaway only.
- Closed – All aquatics, Pulse Gym, crèche and Nippy Gym, Cinema, all indoor sporting facilities, Cinema, Community Youth Centre and Visitor Information Centre

26 March 2020:

- Community Library closed.

30 March 2020:

- Playgrounds, tennis courts and skate park closed.

07 May 2020:

- Playgrounds re-open to the public with COVID safe restrictions in place.

21 May 2020:

- Skate park and tennis courts open subject to COVID safe restrictions.
- Community Library and Community Youth Centre re-open with limited hours and in-person attendance conditions

16 June 2020:

- Pulse Gym re-open to the public with COVID safe restrictions in place.

22 June 2020:

- Dunes Café re-opens with limited in-house dining and COVID safe restrictions in place.

Roxbylink Centre Maintenance:

The January to June 2020 period offered an opportunity to focus upon general asset upkeep including the continuation of the LED light replacement program aimed at reducing power costs for the centre, cinema painting and ceiling work and small maintenance repairs. Unfortunately many of the larger maintenance projects scheduled for the period (such as circuit board upgrades) could not be completed due to inability to source equipment and contractors (due to COVID-19)



PULSE GYM ATTENDANCE



VISITOR INFORMATION CENTRE ATTENDANCE



DUNES CAFE SALES

Down 32%
compared to
same period
last year

COMMUNITY:

Pre COVID-19:

Prior to the service delivery impacts of the COVID-19 pandemic the Community Team coordinated several community events.

- Australia Day – 26 January – 451 community members in attendance at the annual barbecue and award ceremony
- 28 February – Eight local residents were granted Australian Citizenship
- Youth Pool Party – 29 February – over 70 youth participated
- Clean-up Australia Day – 1 March



AUSTRALIA DAY
26 JANUARY



AUSTRALIAN CITIZENSHIP
28 FEBRUARY

Many of Roxby Council's community programs would usually take place on site at the Roxbylink sporting and leisure complex, however the COVID-19 pandemic meant all face to face activities eventually ceased.

Adapting to Government activity restriction directives yet still providing a service to the community was imperative. As such the community team creatively activated a series of 'online/virtual' programs for the community. Activity packs and library resources were also delivered to community members.

From 26 March 2020 the Community Library commenced online virtual delivery of many of its most popular community programs including Toddler Storytime and Baby Bounce; both literacy and learning based programs. 2 new programs were also added to the virtual program – 'Bedtime Stories' and 'My Time' (a program for adults).

VIRTUAL ACTIVITIES		
COMMUNITY LIBRARY	Total online views	
<ul style="list-style-type: none"> • Baby Bounce • Toddler Storytime • Think it Make it Do it • My Time • Bedtime Stories 	BABY BOUNCE	5738
	TODDLER STORY TIME	2403
	BEDTIME STORIES	3545
ACTIVITY PACKS AND LIBRARY RESOURCES		
COMMUNITY LIBRARY AND YOUTH CENTRE	ACTIVITY PACKS DELIVERED	300
<ul style="list-style-type: none"> • Activity packs for online sessions eg: Think it Make it Do it, Youth school activities • Drop ' n ' Wave library book and resource service 	DROP ' N ' WAVE LIBRARY DELIVERIES	106

COMMUNICATIONS:

Community Consultations:

Draft Annual Business Plan and Budget Public Consultation took place from Monday 1 June to Monday 22 June 2020. The Draft Annual Business Plan and Budget outlines Council's priorities and program of works for the next 12 months. Allocating funding for key projects and services, and demonstrates how rates are invested.

Public submission opportunities were provided online survey, hardcopy survey and by two Facebook live sessions. This term did not include an in-person public session due to COVID-19.

Social Media:

- Social Media, in particular, Facebook remains as the most reliable, instant and accessible communication tool for Council.
- Council utilised Social Media as a key tool to inform the community regarding the status of services, facilities and events during the COVID-19 pandemic.
- June saw Council commit to enhanced record keeping of social media activity of Roxby Council, Roxbylink, Roxby Community Library and Roxby Youth.

Website:

Most South Australian council websites rely upon a content management system (CMS) contracted via the Local Government Association. 2020 saw the transition of Council websites to a new CMS. Council took this opportunity to deeply analyse the content of its website. Considerable information cleansing was undertaken as was the analysis of web site traffic and key content.

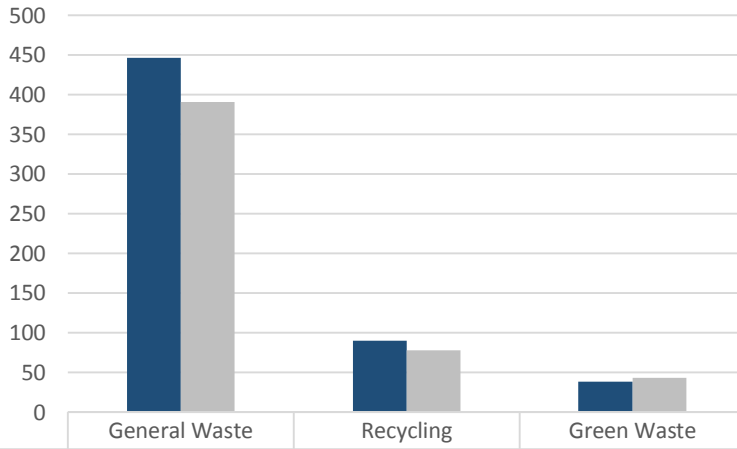
The new site offers improved content searching which should see customers able to more easily and quickly find the information they require.

ROXBY COUNCIL			ROXBYLINK		
23 MARCH 2020 COVID NOTICE • Notifying the community of the closure of a number of premises/venues in accordance with Australian Government directions	People Reached Post Clicks Shares	4082 987 30	23 MARCH 2020 COVID NOTICE • Notifying the community of the closure of a number of premises/venues in accordance with Australian Government directions	People Reached Post Clicks Shares	2107 191 10
07 MAY 2020 PLAYGROUNDS • Informing the community that playgrounds and parks would reopen later that day	People Reached Post Clicks Shares	3072 963 11	11 JUNE 2020 GYM ANNOUNCEMENT • Informing the community that the Pulse Gym would be reopening on 16 June	People Reached Post Clicks Shares	714 305 9

Other Communication Tools:

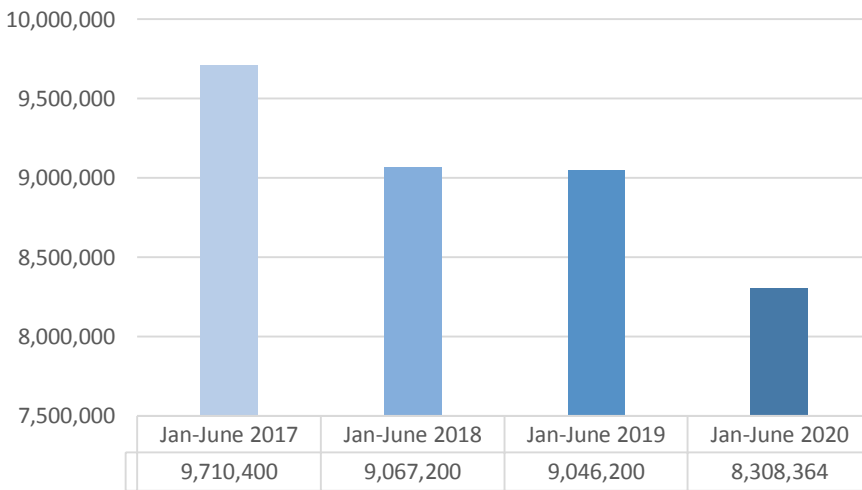
- Council produce and present two radio programs on the local RoxFM radio station.
 - Council Catch-up – The latest Council and community news: Thursdays 9am-10am
 - The Vibe – Events and community news: Fridays 1pm – 2pm
- SMS Broadcast is proving a valuable tool in terms of direct messaging to customers with regard to pending Roxby Power and Roxby Water invoices, and Dog and Cat Registrations. During the January to June 2020 period 620 direct sms texts were sent.

▶ DATA COMPARISONS



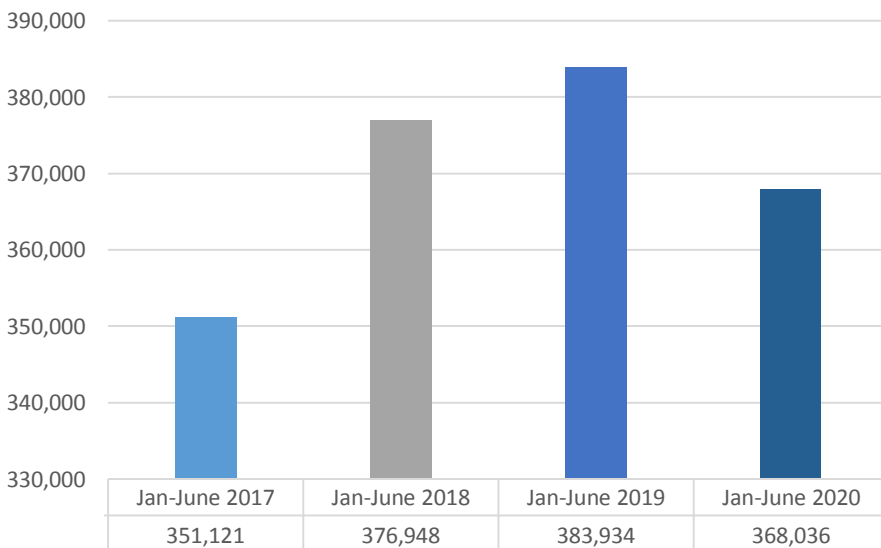
Household Waste – Tonnes Collected (all bins):

The Jan-June 2020 period saw a substantial increase in general waste collected compared to the same period in 2017.



Power Consumption – kWh:

Data records indicate an encouraging decrease in power consumption since 2017. Whilst the population has remained fairly constant it could be speculated that this suggests wiser use of power.



Water Consumption - KL

The Jan-June 2020 period saw a substantial decrease in water consumption compared to the same period last year.