

# A LOCAL GUIDE TO LIVING IN ROXBY DOWNS



# WELCOME TO COUNTRY

*The Municipal Council of Roxby Downs acknowledges the Traditional Custodians of the lands on which we work and live, and recognise their continuous connection to land, waterways and community. We pay respect to the Elders past and present, and extend that respect to other Aboriginal and Torres Strait Islander people(s).*



*2022 Kokatha Art Prize Entrant ShirleyWilliams*

*The Kokatha traditional owners welcome people from different communities and countries that come to live in Roxby Downs to work at the mine, visit or are passing through. The Sleepy Lizard (Gulda) is the significant totem of the Kokatha country. Symbols within the painting represent waterholes, the Kokatha, people coming from across the world, the mines and the sharing of Culture and knowledge.*

# CONTENTS

WELCOME TO COUNTRY .....	2
WELCOME MESSAGE .....	4
ABOUT ROXBY DOWNS .....	5
ROXBY COUNCIL .....	6
COUNCIL DETAILS .....	7
UTILITIES, SERVICE SA & EZYREG .....	8
WASTE AND RECYCLING .....	9
ROXBY LINK .....	10
PARKS AND PLAYGROUNDS .....	14
SKATE PARK, PUMP TRACK, COURTS AND OVALS .....	15
SPORT & RECREATION .....	16
COMMUNITY BOARD & FORUMS .....	17
VOLUNTEERING WITH COUNCIL .....	18
BHP .....	19
ROXBY COMMUNITY HUB .....	20
CHURCH SERVICES.....	22
EDUCATION .....	23
HEALTH SERVICES .....	24
WILDLIFE VOLUNTEERING .....	26
NOTES .....	27

# WELCOME

Welcome to Roxby Downs!

We are pleased to welcome you to our community. No matter how long your stay, we hope that you will find Roxby to be friendly, welcoming and an enjoyable place to visit or call home.

Within these pages you will find some great information about Roxby, available services and a range of engaging community groups and sports to connect with. Feel free to contact any groups and services directly to access the most up-to-date information.

We pride ourselves on being a welcoming community, so please contact Roxby Council or BHP if you have any questions or concerns.

Sincerely,

**RO****BY**  
**COUNCIL**

**BHP**



# ABOUT ROXBY DOWNS

- Roxby Downs and the Olympic Dam mine were officially opened on November 5, 1988.
- The mine was named after a livestock watering dam located on the Roxby Downs pastoral station.
- The dam became known as Olympic Dam as it was built during the 1956 Olympic Games.
- Drilling near the dam in 1975 revealed evidence of a massive ore body below - now known as the Olympic Dam mine.
- The mine is located 16 kilometres north of the town.
- The town of Roxby Downs was built to service the mine. Our town retains the name of the pastoral station on which it was established.
- Natural growth and a major mine expansion saw Roxby Downs grow from a population of 366 in 1986 to 2670 by 1996.

## POPULATION

**4,102**

people estimated to live in Roxby.

Over 500 people are transient - e.g. fly or drive in and out for work.

**30 YEARS**

Median age of residents

**29%**

of residents are under 18 years old.

*\*Based ABS Estimated Resident Population for 2022*



Roxby Downs is 560km north of South Australia's Capital City of Adelaide.

## GETTING TO ROXBY

**Flying:** Alliance Airlines operate flights between Olympic Dam and Adelaide, landing at Olympic Dam Airport (10kms outside of Roxby Downs) - approx. 1.5 hrs.

It is wise to book flights well in advance to secure the lower cost fares.

**Driving:** Outback road conditions, temporary closures, restrictions and warnings are sometimes in place. These can be checked at the Roxby Visitor Information Centre (p.9) or can be accessed online at <https://www.dit.sa.gov.au/OutbackRoads>

**Hire cars:** Vehicles are available from hire operators located at the Olympic Dam airport.

## ELECTORAL DISTRICT

Roxby Downs is part of the Giles state electorate and the Grey federal electoral division.

## DOGS AND CATS

- Only 2 dogs are allowed per property. Written approval is required for more than 2 dogs.
- Only 2 cats per property permitted. Written approval is required for more.
- It is compulsory for owners to microchip their dogs and cats by 12 weeks of age or at the point of sale.
- All new generations of dogs and cats (born after 1 July 2018) must be desexed. (Exemptions apply for working dogs, registered breeders etc.).

These conditions are designed to increase the likelihood of lost or impounded dogs and cats being reunited with their owners and reduce the number of unwanted and abandoned litters euthanised in pounds and shelters.

## DOG PARK

The Council Dog Park is situated on the corner of Pioneer Drive and Olympic Way. The recently refurbished park offers an interactive experience for all dogs as well as a separate area for smaller dogs.



## DOG AND CAT REGISTRATION

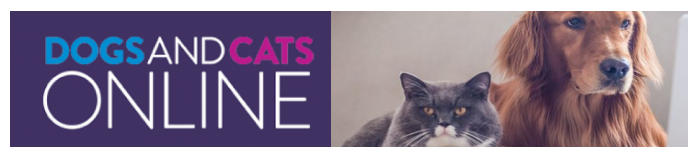
- Dogs must be registered with your local council by three months of age. If you move to a new council area you must register your dog with the new council within 14 days.
- Roxby Council requires all cats over the age of 3 months to be registered.

To register your Dog or Cat or update any details, please visit Dogs and Cats Online

🌐 [www.dogsandcatsonline.com.au](http://www.dogsandcatsonline.com.au)

or

scan the QR Code



## WANDERING CATS AND DOGS

If you see a wandering cat or dog contact Roxby Council on 8671 0010, any time, any day. Council have trained employees who are able to collect the wandering pet safe whilst they work to identify and connect the its registered owner(s).

Only approach a wandering animal if you are certain it is safe to do so.

**HAVE A PET  
EMERGENCY?**



For after-hours or emergency Vet advice go to [vetchat.com.au](http://vetchat.com.au)\*\* and chat with a qualified South Australian Vet.

\*\*Fees may apply



# COUNCIL DETAILS

The Council operates with all of the powers, functions and duties of a South Australian Local Government Authority with a notable exception - the Council is not elected and operates under an Indenture Agreement between BHP and the State Government.

Through this Agreement, an Administrator and Chief Executive are responsible for all of the functions of an elected Council.

## Did you know?

When the Municipality was established in 1982, it was always intended that the appointment of the Administrator would be only interim, as a prelude to a possible future elected Council.

At the time, it was thought that the town would have grown to a population in the vicinity of 9,000. In these circumstances, it was thought that there would be enough population to financially sustain a fully independent operation that could be effectively self-sufficient.

As it currently stands it is unlikely that this initial prediction will, in the short to medium term, be reached.

## STAYING UP-TO-DATE

Check out our website and Facebook page for Council-related local news and announcements.



[www.roxbydowns.sa.gov.au](http://www.roxbydowns.sa.gov.au)



[Roxby Council](#)



## Council Office



6 Richardson Place  
Roxby Downs SA 5725



08 8671 0010



[roxby@roxbycouncil.com.au](mailto:roxby@roxbycouncil.com.au)

## OFFICE HOURS

- Monday to Friday - 9:00am to 5:00pm
- Service SA and Ezyreg  
Monday to Thursday.  
9:00am - 4:30pm



Council services operating from the main office on Richardson Place include works management, building and planning, governance, administration, rates, and environmental services.

At Council, we manage a wide range of traditional municipal services including roads, streets, footpaths, parks and gardens.

Unlike most metropolitan councils, we also operate separate electricity (Roxby Power) and water (Roxby Water) authorities including associated infrastructure.

The facilities and infrastructure in Roxby Downs are of high quality and the envy of most other towns, making Roxby Downs an Australian mining town of choice.

## POWER AND WATER

- All water and power connections and disconnections need to be arranged through Roxby Council. Roxby Water and Roxby Power, both business units of the Roxby Council, are the only suppliers of these services.
- Applications for water and power supply can be obtained from the council offices on Richardson Place or found on the website at <https://www.roxbydowns.sa.gov.au/council/customerservice/forms>
- eBilling - Customers must specifically advise us that you would prefer to have eBilling.
- Accounts can be paid in person at the Council office (cash, cheque or EFTPOS) or via the telephone (Credit Card only) during office hours. You can also pay via BPAY / Internet banking. If paying via BPAY or Internet Banking please send a copy of the receipt to [roxby@roxbycouncil.com.au](mailto:roxby@roxbycouncil.com.au)

## SERVICE SA & EZYREG

Roxby Council acts as a Rural Service Agent for Service SA and has been operating as the local service center for Transport SA transactions since 2007.

- Transactions are processed by the Port Pirie branch of Service SA.
- Roxby Council Customer Service can also complete EzyReg transactions.
- This service is available Monday to Thursday, 9.00am - 4.30pm, at the Roxby Council office on Richardson Place.
- Please note that written Learner's and Boat Licence theory tests must commence before 3.30pm on Monday to Thursday and need to be booked in advance.



*service sa*



## GAS

Gas is supplied by Origin Energy

- Contact Origin for your gas needs.
- You need to state that Roxby Downs uses LPG Metered Gas.
- For more information, contact Origin below

☎ 13 33 74

🌐 [www.originenergy.com.au](http://www.originenergy.com.au)



**ROXBY**  
**WATER**

**ROXBY**  
**POWER**

## AVAILABLE SERVICES

- Licence Renewals
- Vehicle Registration & Transfers
- Driver's Licence and Boat Licence Theory Tests
- Drivers Handbook's for sale

### ServiceSA & EzyReg Open Hours

Monday to Thursday  
9.00am - 4.30pm  
at the Roxby Council Office

For written Learner's and Boat Licence theory tests, please contact Council.

For more information, please contact Service SA on 131 084.



# WASTE AND RECYCLING

## KERBSIDE COLLECTION

- Council provides a kerbside collection waste service, with a weekly general waste, fortnightly recycling and monthly green waste collection.
- It is the property owner or tenant's responsibility to maintain a structurally sound wheelie bin complete with lid.
- Bins need to be placed on the kerb the night before collection with handles facing towards the property and the bin lid firmly closed.
- Waste management service also operates from the Opal Road Waste Management Facility, operated by Veolia.
- Roxby Council encourages all residents to reduce, reuse and recycle wherever possible.
- All households have:
  - a **red** bin for general waste (*collected weekly*)
  - a **yellow** bin for recycling (*collected fortnightly*)
  - a **green** bin for garden materials (*collected monthly*)

To find out more about what can go into which bin, or to check when your bins will be collected, visit Council's website at

<https://www.roxbydowns.sa.gov.au/wasteservices/kerbside-collection-in-roxby-downs>

## HOUSEHOLD WASTE AND RECYCLING FREE DROP-OFF INFORMATION

Roxby Downs residents have access to free residential waste drop-off for their household waste and recycling.

This service is provided by Roxby Council to support the community, and is available from Friday to Monday between the hours of 8:30am & 11:30am.

*Note: You may be asked to provide proof of Roxby Downs residency (eg: current driver's licence detailing Roxby Downs address).*

For further details a visit the Waste & Recycling section of Council's website. or scan the QR Code.



## WANT A COPY OF THE WASTE CALENDAR?



Visit the Council office or scan the QR code!

## BIN REPAIR OR REPLACEMENT

- Wheel fallen off your bin
- Need a replacement?
- Did your bin get 'missed' on collection day?

Please contact Veolia on 0455 305 487.

## E-WASTE, INK CARTRIDGES AND BATTERIES

The below products can be recycled at the listed locations:

### Printer Ink Cartridges:

- Council office foyer

### Batteries:

- Council office foyer, Woolworths, Mitre 10

### Mobile Phones / phone accessories:

- Woolworths

### ADDRESS

Lot 673 Opal Road, Roxby Downs SA

### FACILITY OPENING HOURS\*

7 days a week -Monday to Sunday  
8:00am - 2:00pm

### FREE RESIDENTIAL WASTE DROP-OFF\*

Friday to Monday only  
8.30am - 11.30am

### CONTACT

0455 305 487

*\*Closed on Australia Day, New Years Day, Christmas Day, Boxing Day and Good Friday and in occasional inclement weather.*

# ROXYBY LINK

Roxby Link is a business unit of the Roxby Downs Council which provides leisure, recreation and cultural support and services to the community.

As a result, the Roxby Link organisational structure has been developed around a team approach with key members in Community, Recreation and Sport, Events and Hospitality, Fitness and Wellbeing and Youth.

## DUNES CAFÉ

The Dunes Café is situated in the heart of Roxby Downs and is the perfect place for breakfast, lunch, and morning/afternoon tea. It caters for approximately 70 people, with inside and outside seating available, making it a great location for meetings and functions.

Not only does the Dunes Café make the best coffee, but they also have milkshakes, thick shakes, iced drinks, soft drinks and juices available. Feast your eyes upon the cakes, slices, cupcakes and cookies on offer in the front fridge, perfect to accompany your morning and afternoon coffee.

The Dunes Café also offers a wide variety of grab and go sandwiches and salads for those on the run as well as a separate Play Café with play equipment for the kids, providing a great family environment.

## OPENING HOURS, MENU AND ORDERING

<https://www.roxybydowns.sa.gov.au/lifestyleandsport/dunescafe>



# ROXYBY LINK



15/1 Richardson Place  
Roxby Downs SA



8671 0500



info@roxbylink.com.au



## VISITOR INFORMATION CENTRE (VIC)

The Roxby Downs Visitor Information Centre (VIC) is located within the Roxby Link complex, centrally located on Richardson Place (the main street in Roxby Downs).



Our friendly staff are on hand to provide free visitor information and maps on Roxby Downs and our neighbouring regions.

The VIC offers:

- Tour Bookings
- Brochures and Maps
- Gifts and Souvenirs
- The Olympic Dam Story video presentation
- Community Information
- Free Wi-Fi
- Outback Road Condition Report

<https://www.roxybydowns.sa.gov.au/lifestyleandsport/visitor-information/about>



Roxby Downs Visitor Information Centre



## AQUATIC CENTRE

The aquatic facilities are very popular with locals and tourists alike and include BBQ facilities and picnic tables, large change rooms, qualified lifeguards and hydrotherapy equipment.

### Outdoor Pool

25m long, 2.1m depth max and 6 lanes featuring a water slide, water features and beach entry to the leisure pool.

### Indoor Pool

Heated 16.6m long and 1.1m deep. Popular for lap swimming and hydrotherapy.

### Splash Pad

Zero depth play space very popular for all ages and features huge water tipping bucket and interactive water features.

Large, grassed picnic/sitting area with tables, seating and shade. Family BBQ facilities and baby change room.

Open hours of the various aquatic facilities vary according to the season and school holiday periods. To find the most up to date times and schedules go to:

## OPENING HOURS AND SCHEDULES

<https://www.roxbydowns.sa.gov.au/lifestyleandsport/aquatics>



## PULSE FITNESS GYM

Pulse fitness is centrally located within Roxby Link and is here to assist you in achieving your fitness goals and to maintain a healthy lifestyle through providing advanced fitness equipment in a fully air- conditioned space, along with lockers and full bathroom facilities.

Friendly staff members are always on hand to assist with your workout.

A variety of group fitness classes are available at reasonable rates\*\*. Pulse Fitness is like no other gym in the outback and will certainly get your heart racing!

Find more info on our website!

*\*\* Subject to instructor availability. Contact the Pulse Fitness Gym for availability*

## OPENING HOURS AND PROGRAMS

<https://www.roxbydowns.sa.gov.au/lifestyleandsport/gym>



# ROXBY LINK

## CINEMA

The Cinema is located next door to the Art Gallery within Roxby Link. It caters for approximately 60 people and showcases the latest feature films, so no Roxby Downs resident misses out on the cinema experience.

The layout makes it the most suitable location for hosting seminars or lectures, offering full multimedia facilities and features. Toilet facilities are located around the corner in the Community Library, so you won't miss any of the movie.

The movie schedule is always kept updated to ensure you never miss out on the feature films that are showcased in Roxby Downs.

### OPERATING HOURS AND SCHEDULES

<https://www.roxbydowns.sa.gov.au/lifestyleandsport/cinema>



## COMMUNITY YOUTH CENTRE (CYC)

The Roxby Downs Community Youth Centre (CYC) is a modern facility which includes games, wireless internet access, video and TV screens, pool table and more. The CYC also has a commercial quality kitchen with the latest equipment. The space is regularly used by town youth and local Foodie groups.

The CYC also hosts regular Youth Advisory Committee (YAC) meetings and activities. In conjunction with the Community Board the YAC is a committee of young people aged 12-18 years who plan, promote and deliver youth-oriented events, programs and services in Roxby Downs.

The YAC regularly provide feedback to the Community Board and Roxby Council on youth and other issues.

### OPERATING HOURS AND SCHEDULES

<https://www.roxbydowns.sa.gov.au/community/youthservices/youthcentre>



Roxby Youth



## COMMUNITY LIBRARY

The Roxby Downs Community Library is located in the heart of Roxby Link. As a purpose-built library it has ample work, reading, computing and meeting spaces.

The library offers the community and visitors access to a wide range of resources and services such as photocopying, printing, scanning, and internet access.

The Community Library also hosts a range of children's programs including Toddler Storytime and school holiday activities

### PROGRAM DETAILS AND BOOKING ENQUIRIES

<https://www.roxbydowns.sa.gov.au/lifestyleandsport/community-library>



## ART GALLERY

Roxby Downs hosts the Roxby Link Art Gallery which is situated within the Roxby Link Cultural and Leisure Centre on Richardson Place. The Gallery aims to provide a unique, quality venue that is open for the display of a variety of cultural activities and products. We welcome submissions from artists, designers, curators, writers and organisations.

Exhibitions are sourced both locally and from across South Australia. The Gallery also serves as a venue for professional touring exhibitions that aim to compliment other existing local community and regional facilities.

Find out more information at <https://www.roxbydowns.sa.gov.au/lifestyleandsport/art-gallery>



## COMMUNITY CALENDAR

Have an event that you want to let the community know about? You can request your event to be added to the Council Community Calendar!

<https://www.roxbydowns.sa.gov.au/community/event-calendar>



# PARKS AND PLAYGROUNDS

Roxby Downs features a variety of great parks and playgrounds for the whole community to enjoy.

## ROTARY PARK

📍 Curdimurka St or Mulgaria Crescent

This park has secure fencing, a shaded play area and picnic tables, toilet, drinking fountain, and BBQ facilities.



## LIONS PARK

📍 Richardson Place

Includes shaded play area and playground, plus picnic tables, toilets, drinking fountain, and BBQ facilities.

Next to the local skate park and close to the tennis courts.



## HERMIT STREET PARK NATURE PLAY SPACE

📍 25 Hermit Street

Includes shaded play area and playground, plus picnic tables, toilet with change table, drinking fountain, and BBQ facilities. The modern nature play space includes a slide, rope net, net bridge, balance posts, swings and a water play feature with a sand pit.

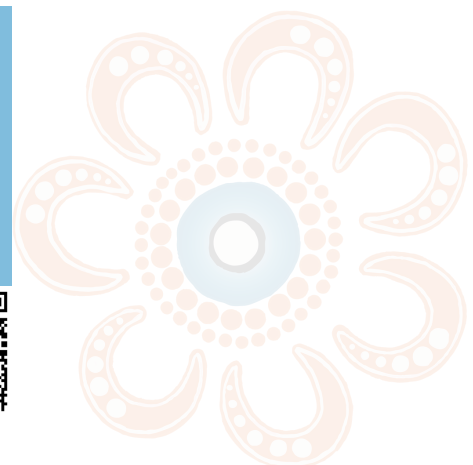


### PARK BOOKINGS

We require bookings when external businesses are being engaged to provide services onsite at a park, and encourage other community bookings for use of the a park for an event (e.g. birthday party).

To book complete the Park Bookings Request Form, which is located on Councils website.

<https://www.roxbydowns.sa.gov.au/lifestyleandsport/parks-and-playgrounds/park-booking-request-form>



# SKATE PARK, PUMP TRACK, COURTS AND OVALS

For those looking for outdoor sporting and recreational facilities, Roxby features great options servicing a variety of sporting interests.

## PUMP TRACK

📍 Corner of Olympic Way and Burgoyne St

The Pump Track features three concreted tracks for use with bicycles and scooters.



## SKATE PARK

📍 Richardson Place, through car park

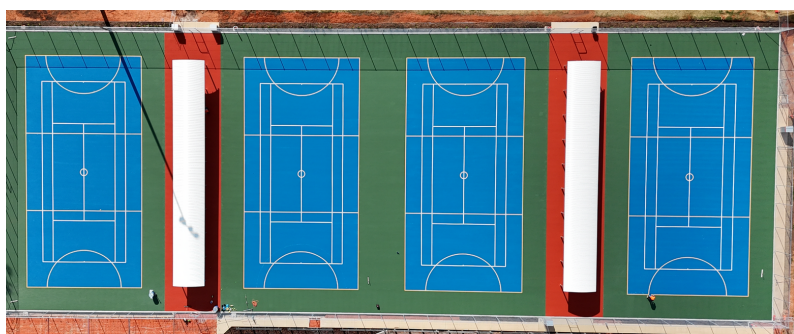
The concrete park features a spine, flat banks, quarters and fun box. Located conveniently next to Lions Park.



## TENNIS / NETBALL COURTS

📍 Richardson Place, through car park

The Sports Precinct Upgrade project is seeing the completion of modern, high quality netball and tennis courts, with accompanying shaded areas and seating and LED lighting for night-time use. Nearby access to the Roxby Link Leisure Centre and available amenities.



## OVALS

📍 Olympic Way, Richardson Place through car park

Two ovals are available for various sporting and community purposes, including a large football oval with LED lighting for night-time use. Both ovals are a stone's throw from brand new modern team changeroom facilities currently being constructed.



# SPORT & RECREATION

## ROXBY JUNIOR SPORTS ACADEMY

The Roxby Junior Sports Academy provides talented athletes in Roxby Downs with additional sporting and training opportunities that assist with identifying talent pathways at a local, state and/or national level.

Selected athletes have access to specialised coaching in key performance areas including strength, conditioning, speed, agility, acceleration, sports psychology and nutrition. Opportunities are provided to travel to elite sporting venues in Adelaide and gain insight into performing at an elite level. Athletes also participate in elite-level testing such as VO2max, hydrostatic weighing, maximal power and vertical jump testing at selected High Performance Sports Centres.

RJSA is reliant on sponsorship from local businesses and is proudly supported by a number of partners including BHP, Alliance Airlines and Roxby Council.



## SPORT & RECREATION FACEBOOK PAGES AND GROUPS

### Basketball

- Roxby Downs Junior Basketball
- Roxby Downs Senior Basketball

### Cricket

- Roxby Districts Cricket Association

### Dance

- Roxby Academy of Dance
- Cabarfeidh All Stars

### Darts

- Roxby Downs Darts League

### Football

- Roxby Downs Junior Football Association
- Far North Football League

### Golf

- Roxby Downs Golf Club

### Horse and Pony Sports

- Roxby Downs Horse and Pony Club
- Roxby Downs Races

### Motor Sports

- Roxby Downs Motocross Club
- Desert Dirt Kart Club
- Roxby Downs Sporting Car Club - Dirt Circuit

### Netball

- Roxby Downs Netball Association

### Scouts

- Roxby Downs Scouts

### Shooting

- Andamooka Sports Shooting Association

### Soccer

- Roxby Downs Soccer
- Roxby Soccer Club

### Multi-Sport Clubs

- East Roxby Sporting Club
- RDSC - The Miners
- Hornridge Sporting Club
- Olympic Dam Sporting Club



# COMMUNITY BOARD & FORUMS



## community board ROXBY FORUMS

The Roxby Downs Community Board represents the voice of the community. The Board's subcommittees (known as Forums) plan, develop and operate a range of programs, activities and events that support these aims and cover important sectors of the community.

Residents can join these Forums at any time.

For more information email the Community Board at [communityboard@roxbydowns.com](mailto:communityboard@roxbydowns.com)



### business ROXBY FORUMS

This Forum is the Executive Steering Committee representing the interests of local businesses, to promote a sustainable business environment and economic growth in Roxby Downs.



[Roxby Downs Business Forum](#)



### community garden ROXBY FORUMS

The Community Garden group is developing the Community Garden located on the corner of Pioneer Drive, Alberrie Street and Mulgaria Crescent.



### environment ROXBY FORUMS

This forum aims to be a driving network behind community educational and innovative initiatives that improve the sustainability and environment of the town.



### family ROXBY FORUMS

The Family Forum aims to represent and collectively assist local families to strengthen their resilience through a range of community development programs.



### multicultural ROXBY FORUMS

This Forum celebrates the cultural diversity of our community.



### sport and rec ROXBY FORUMS

This Forum works to promote a sustainable recreation and sporting environment that can adapt and grow to match the recreation and sporting needs and aspirations of our community.



### womens network ROXBY FORUMS

This Forum supports and encourages the involvement and participation of women in community life.



### health ROXBY FORUMS

The Health Forum supports the local community through advocacy and lobbying for the improved or expanded health services. The Forum also runs promotional campaigns to support improved physical and mental health for all residents.



Youth Advisory Committee

The Youth Advisory Committee (YAC) is designed for young people aged 12 – 18 years who want to make a difference in their community through planning, promoting and delivering youth orientated events, programs and services to Roxby Downs.

# VOLUNTEERING WITH COUNCIL

Volunteers help create stronger and more cohesive communities. There are also many benefits for people who volunteer.

- Make valuable social connections and contacts
- Increase self-confidence
- Develop valuable life and job skills
- Have fun and find fulfilment

The time you contribute to volunteering in the community can be as little or as much as you like. Every moment counts!

Volunteering with Council is also flexible. Let our community team know about your availability and we will arrange your volunteering time around your other commitments.



## INTERESTED IN VOLUNTEERING?

Register your interest today by contacting the Community Team at [communityteam@roxbycouncil.com.au](mailto:communityteam@roxbycouncil.com.au) or by phoning 8671 0010 and ask to speak to a member of the Community Team. We would love to hear from you!



## ABOUT BHP OLYMPIC DAM

BHP's Olympic Dam ore body is one of the world's most significant deposits of copper, gold, silver and uranium.



Olympic Dam is made up of underground and surface operations and operates a fully integrated processing facility from ore to metal. The underground mine includes more than 450km of roads and tunnels. Ore mined underground is hauled by an automated train system to crushing, storage and ore hoisting facilities.

Products developed at Olympic Dam are sold to customers all around the world. Demand will continue to grow for our natural resources as the world shifts to a decarbonised future. BHP is focused on commodities that will shape a greener world and continue to power economic growth.

Olympic Dam and Roxby Downs are iconic in South Australia. The operations site and the town are multi-generational and have contributed significantly to the state's economy, community, and the global resource market.

## EMPLOYEE BUS SERVICE

BHP offers a bus service for Olympic Dam employees to travel to and from Roxby Downs and Olympic Dam. There are five bus stops in Roxby Downs, they are located on Burgoyne St at the Roxby Downs Village, Stuart Road, Quandong Street, Pioneer Drive and Axehead Road. BHP employees can access the bus schedule by downloading the 'Guesst' app or visiting the Digital Workspace.

## EMPLOYMENT ENQUIRIES

For all employment enquiries please visit the BHP Careers Portal at [bhp.com](http://bhp.com) or scan the QR Code →



## BHP AND THE COMMUNITY

BHP's purpose is to bring people and resources together to build a better world. BHP aims to collaborate with communities to achieve long-term social, environmental and economic outcomes, and maintaining frequent, meaningful engagement with its stakeholders.

BHP supports a range of initiatives in South Australia, many focussed in our host region of Roxby Downs, contributing to improved quality of life in key areas such as mental and physical health, community wellbeing, and early childhood education. BHP also recognises that its environmental performance and management of environmental impacts on its host communities is an important part of its contribution to social value.

As part of its commitment to the community, BHP offers a Community Donation Program to support small, short-term projects and events that demonstrate a benefit to the community.

Funding is available in two rounds per year, and community organisations are encouraged to apply for funding for eligible projects. Community donations can be funded up to \$30,000.

For more information, please email [OlympicDamCorporateAffairs@bhp.com](mailto:OlympicDamCorporateAffairs@bhp.com)

## TOWN OFFICE

BHP Town Office manages residential company housing for permanent BHP employees.

BHP Town Office operating hours:

- Monday – Friday
- 9am – 4pm
- 08 8671 7000
- [ODTownOfficeHousing@bhp.com](mailto:ODTownOfficeHousing@bhp.com)

A safe and welcoming venue for locals to connect with others and to access information on relevant supports and services.

## Community **HUB**



A space for individuals and groups to connect within the community. The Hub space is open for community members to access information on relevant supports and services, Hub Time four mornings a week and is also able to be booked by community groups and businesses that offer services to our community.

The Community Hub also has a book library comprising of over 300 resources. There are books for parents, children and educators that range from early years and teens to wellbeing which you are able to hire out for free.

## Wellbeing **HUB**

A health promotion and capacity building initiative which takes a whole of community approach to improving the health and wellbeing of local residents. Wellbeing Hub is based on a model of working together with local health and wellness professionals to improve health outcomes.

## family **HUB**

The provision of capacity building support for local families through locally-delivered programs, a virtual support network and activities to support the wellbeing and resilience of parents, carers, children and teens.

## Innovation **HUB**

A co-working space located in the heart of the Roxby Downs community. It aims to build and facilitate networking across adults working and studying in Roxby Downs and connect with local businesses and education support services.

# ROXBBY COMMUNITY HUB

## COMMUNITY HUB GENERAL OPENING HOURS


Monday to Friday  
9:00am to 3:00pm

## DROP-IN TIMES

Drop in for community members to meet and have a cuppa.

There is also a great play space for young children.

- Monday 9:00am until 1:00pm
- Tuesday 9:00am until 1:00pm
- Wednesday 9:00am until 1:00pm
- Thursday No Drop-in Time
- Friday 9:00am until 1:00pm

 The Community Hub is closed on Public Holidays.



Closures may also sometimes occur during school holidays for cleaning, maintenance or administration.

Visit the Community Hub's Facebook page for further information.



## CONTACT DETAILS

-  (08) 8671 2461
-  Shop 8, Richardson Place
-  [hub@healthyenvirons.com.au](mailto:hub@healthyenvirons.com.au)
-  [www.roxbycommunityhub.com.au](http://www.roxbycommunityhub.com.au)

 Scan to find us on Facebook\*   
\*you may be required to log-in



**BHP**  **Healthy Environs**

**Community HUB**

The Community Hub is proudly supported by BHP in partnership with Healthy Environs Pty Ltd

# CHURCH SERVICES

## ST BARBARA'S CATHOLIC PARISH

- ☎ 0412 362 197 (Fr Francis Montero)  
0488 010 216 (Sr Patricia Hogan)
- 📍 10 Richardson Place (Mass Centre)  
45A Gregory Street (Parish Office)

 [Roxby Downs Catholic Community](#)



## ROXBY DOWNS LUTHERAN CHURCH

- ☎ 0409 982 004
- 📍 97 Pioneer Drive

 [Roxby Downs Lutheran Church](#)



## ROXBY DOWNS CHRISTIAN COMMUNITY CHURCH

- ☎ 08 8671 1221 / 0433 077 330
- 📍 Corner of Tutop and Burgoyne Street
- ✉ [roxbydownsccc@gmail.com](mailto:roxbydownsccc@gmail.com),  
[glen.mcdonald@live.com.au](mailto:glen.mcdonald@live.com.au)
- 🌐 <http://roxbychurch.weebly.com>

 [Roxby Downs Christian Community Church](#)



## ANDAMOOKA BIBLE CHURCH

8672 7004

## ANDAMOOKA CHRISTIAN COMMUNITY CHURCH

- ☎ 08 8671 1221 / 0433 077 330
- 📍 Corner of Tutop and Burgoyne Street
- ✉ [roxbydownsccc@gmail.com](mailto:roxbydownsccc@gmail.com),  
[glen.mcdonald@live.com.au](mailto:glen.mcdonald@live.com.au)
- 🌐 <http://roxbychurch.weebly.com>



# EDUCATION

## ROXBY DOWNS CHILDREN'S CENTRE

For Early Childhood Development and Parenting

Department for Education, Kindergarten and Child Care and Out of School Hours Care (OSHC)

☎ 8671 0455

📍 5 Richardson Place

🌐 [roxbycc.sa.edu.au](http://roxbycc.sa.edu.au)

 [Roxby Downs Children's Centre](#)



## ROXBY DOWNS AREA SCHOOL

A DECD state school offering education from Reception to Year 12.

☎ 8671 0011

📍 7 Richardson Place

🌐 [www.rdas.sa.edu.au](http://www.rdas.sa.edu.au)

 [Roxby Downs Area School](#)



## SAINT BARBARA'S PARISH SCHOOL

Offers Catholic education from Reception to Year 9.

☎ 8671 3207

📍 78 Pioneer Drive

✉ [info@stbarbs.catholic.edu.au](mailto:info@stbarbs.catholic.edu.au)

🌐 [stbarbs.catholic.edu.au](http://stbarbs.catholic.edu.au)

 [St Barbara's Parish School](#)



## UNI HUB SPENCER GULF

Support is now available in Roxby Downs for those wanting to access university without leaving the region

☎ (08) 8656 9955

📍 12/28 Richardson Place

✉ [roxbydowns@unihubsg.org](mailto:roxbydowns@unihubsg.org)

🌐 <https://unihubsg.org/>

 **UniHub**  
Spencer Gulf

## ROXBY DOWNS HEALTH SERVICE

☎ 8671 9020

📍 16-28 Burgoyne Street

Services available:

- 24-hour Accident and Emergency
- Inpatient ward
- On-site X-ray
- Community Midwife
- Community Health Nurse
- Allied Health Assistant
- Aboriginal Liaison Officer
- Visiting specialists

*Roxby Downs falls under the Country SA Primary Health Network (PHN)?*

*To learn more about the Country SA PHN, visit:*

🌐 <https://www.countrysaphn.com.au>

## VISITING SERVICES AND SPECIALISTS

For the following services, call:

☎ 1800 003 307

- Aged Care Assessment Team (ACAT)
- Dietician
- Diabetic Educator
- Occupational Therapist
- Physiotherapist
- Podiatrist
- Speech Pathologist
- Social Worker



## OTHER ON-SITE OR VISITING SERVICES

CaFHS – Child & Family Health Service

☎ 1300 733 606

🌐 <https://www.cafhs.sa.gov.au>

Remote Dental – Visits onsite

☎ 8671 9031

🌐 <https://remotedental.com.au>

Gulf & Ranges Optometrists – Visits onsite

☎ 8642 2766

🌐 <https://gulfandranges.com.au>

CAMHS - Child & Adolescent Mental Health Service

☎ 1800 819 089 for an appointment

Community Mental Health Worker

☎ 8668 7800 for an appointment

DASSA - Drug & Alcohol Services SA

☎ 8668 7800 for an appointment

Orthodontic Smile Practice

☎ 8296 8683

**HAVE AN EMERGENCY? CALL 000**



# HEALTH SERVICES

## ROXBY DOWNS DOCTORS SURGERY

☎ 8671 1900

🌐 [www.roxydoctors.com.au](http://www.roxydoctors.com.au)

Onsite at Roxby Downs Health Service.

## ROXBY DOWNS FAMILY PRACTICE

☎ 8671 3231

🌐 [www.roxyfamilydoctors.com.au](http://www.roxyfamilydoctors.com.au)

📍 24 Gregory Street

Bookings available online:

[www.roxyfamilydoctors.com.au/online-appointments/](http://www.roxyfamilydoctors.com.au/online-appointments/)

## FLIPSIDE YOUTH HEALTH SERVICE

Mental Health and Wellbeing support for young people aged 12-25 years old.

Contact via Headspace Port Augusta

☎ 8641 4300

Onsite at Roxby Downs Health Service and Roxby Downs Area School.

**Flipside**  
Youth Health  
Service

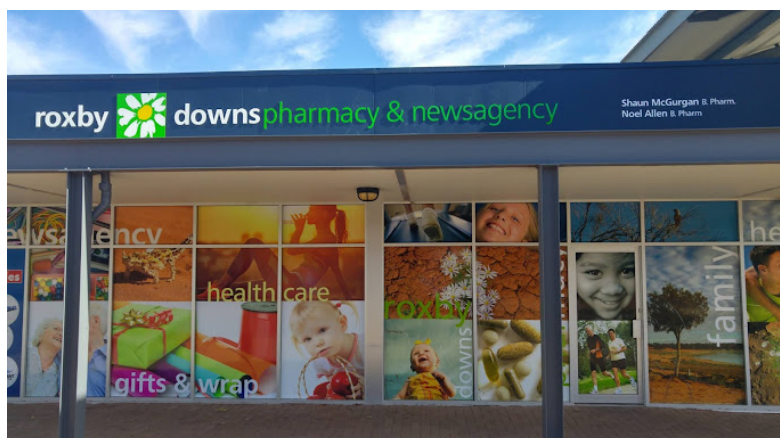
**Contact each service / program directly for further details of current hours of operation and services provided.**

**If you have any general questions about local health resources, or need assistance accessing these services, contact the Community Hub on (08) 8671 2461 or email [hub@healthyenvirons.com.au](mailto:hub@healthyenvirons.com.au)**

## ROXBY DOWNS PHARMACY

☎ 8671 1322

📍 Roxby Central, Richardson Place



## RFDS ANDAMOOKA CLINIC

☎ 8672 1322

📍 Hospital Road, Andamooka





For care and advice on injured wildlife call:

**Fauna  
Rescue SA  
8289 0896**

# VOLUNTEERS

Training and various roles available - including phone operators, joey, bird, or reptile carers

# NEEDED!



Email [info@faunarescue.org.au](mailto:info@faunarescue.org.au) for more information

If you have an unwelcome snake visitor call....

# Roxby Downs Wildlife Hotline

**0497 808 315**

You may come across snakes and other reptiles, whilst in Roxby Downs. All snakes are best left alone and they will soon move on.

Be snake aware....

- Keep areas around your home clean and clear
- Remove rubbish that snakes may hide in
- Be alert during warmer months when snakes are more active
- Wear long pants and closed shoes when walking in dune & scrub areas



If you see a snake....

- Stay calm & keep a safe distance
- If the snake is near houses, pets or may be injured call the hotline for assistance
- Keep the snake in sight until a volunteer arrives
- DO NOT try to catch or harm the snake



A series of horizontal lines for writing, with decorative concentric circles in the background.

The contents of this booklet will be periodically reviewed and updated.  
If you notice something that needs updating please contact Council at by phoning 8671 0010 or send us you recommendations by email at [roxby@roxbycouncil.com.au](mailto:roxby@roxbycouncil.com.au)

## VISIT US

6 Richardson Place  
Roxby Downs SA 5725

Monday to Friday  
9am to 5pm

## CONTACT US

[roxby@roxbycouncil.com.au](mailto:roxby@roxbycouncil.com.au)

[www.roxbydowns.sa.gov.au](http://www.roxbydowns.sa.gov.au)

08 8671 0010

## MAIL US

Roxby Council  
PO Box 124  
Roxby Downs SA 5725



@RoxbyCouncil

@RoxbyLink

@RoxbyYouth

@RoxbyCommunityLibrary

**RO**  **BY**  
**COUNCIL**

**BHP**