

ANDAMOOKA OPAL SHOWROOM, MOTEL & POST OFFICE

ANDAMOOKA OPAL MUSEUM
275 Opal Creek Blvd. Andamooka
Ph: 08 8672 7007 Fax: 08 8672 7062
Margot Duke or Peter Taubers
www.andamookaopal.com.au

ALLSTAFF
Adelaide • Barossa • Roxby Downs

1300 55 66 22

SPECIALIST RECRUITMENT & LABOUR HIRE

Mining • Defence • Engineering
Construction • Civil • Manufacturing

allstaff@allstaffresources.com.au

www.allstaffresources.com.au

Raine&Horne.

Roxby Downs

Your local real estate experts

8671 3355

rh.com.au/roxbydowns

MTM CONTRACTORS

Refrigeration ~ Air Conditioning
Carpentry ~ Painting ~ Plumbing
Fencing ~ Electrical ~ Civil Construction

PO BOX 272 Roxby Downs SA 5725
P: (08) 8671 1234
E: mark@mtmcontractors.com.au
Mark Beenham - Managing Director
M: 0407 711 234

BLD 227 523 | AU23861 | ABN 96 128 038559

ANDREWS PROPERTY

Sales & Rentals
Residential & Commercial

If you are thinking of selling - we offer free appraisals and market updates - it's free to ask how we would sell your property and experience the Andrews Property difference.

**34 Pioneer Drive
Roxby Downs SA 5725**
(08) 8671 2000 | 0418 700 600

andrewsproperty.com.au

ARID RECOVERY

SUNSET TOURS

Tag along on a sunset & nocturnal walk to see the spectacular views we have on our doorstep, as well as a chance to spotlight for Arid Recovery's incredible wildlife.

Bookings via the Visitor Information Centre Ph: 8671 5942

www.aridrecovery.org.au

MOSSY ELECTRICAL PTY LTD

100 Tiliqua Crescent
Roxby Downs
ABN: 31989668289
PGE: 299040

mossy.electrical@bigpond.com

Ph: 0457 727 119
Ph: 0417 806 910

Visit the renowned

TUCKABOX HOTEL

OPEN 7 DAYS FROM 11AM
Lunch 12pm - 2pm
Dinner 6pm - 8.30pm

Dine in or take-away
Opal Creek Blvd Andamooka
Ph: 08 8672 7137

Keno UBET

Serving miners since 1960

ANDAMOOKA OBSERVATORY

OPAL • TOURS • MINING
NAKED EYE ASTRONOMY
BOOKS • ART

BOOKINGS & ENQUIRIES
0487 112 747

CAL THE STONER

STONEMASON | SCULPTURES | ART
FEATURING TWO LIFE SIZE SCULPTURES

2020 'ANDAMOOKA TIGER' WITH ANDAMOOKA OPAL EYES, NOSE, TAIL & CLAWS
2021 'THE GODDESS' (TOUT NU) WITH ANDAMOOKA OPAL FEATURES

ENTRY: BRING A COLD BEER | 2PM-3PM

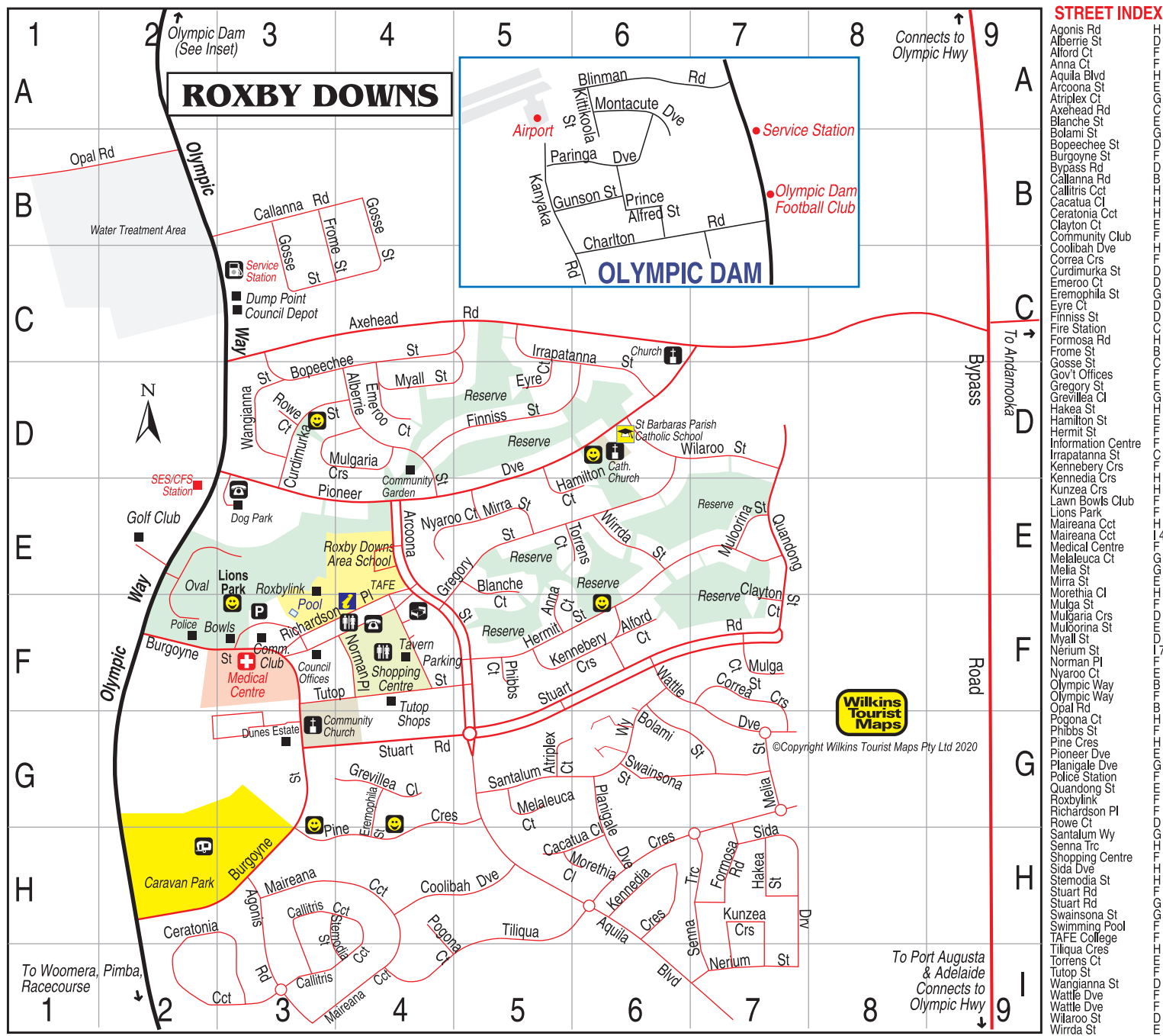
CALL CAL ON 0403042973

roxbycouncil
young vibrant community

6 Richardson Place, Roxby Downs
Phone: (08) 8671 0010
Open Monday - Friday
9am - 5pm
www.roxbydowns.sa.gov.au

Published by
WILKINS TOURIST MAPS Pty Ltd
P.O. Box 42 Triabunna Tas. 7190.
Ph: 0428 854 080
Email: enquiries@wilmap.com.au

DISCLAIMER
While every care is taken to ensure information, maps and advertising material contained in this publication is correct we accept no liability under any circumstances for any inaccuracies existing or implied should they be inaccurate.



Hundreds of flower species will be seen in the Outback after steady rain including this 'Poached Egg' Daisy.

ROXBY DOWNS COMMUNITY GARDEN

Come and explore the Community Garden located in the reserve between Pioneer Dr, Alberrie St and Mulgaria Cres.

A place to connect with community and grow successfully in our arid environment

ROXBY AESTHETICS

24 Gregory Street, Roxby Downs SA
Ph: (08) 8671 3231

Dr Simon & Juliette Lockwood at Roxby Downs Family Practice

Full time Cosmetic Practice

- Cosmetic Injectables
- Lip and Cheek fillers
- Skin Peels
- Skin Needling
- LED treatments
- Anti-sweating treatments
- Skin Cancer checks
- Acne treatments
- Skin cancer surgery & mole removal
- Cryotherapy

roxbylink

- Visitor Information Centre
- Dunes Cafe
- Art Gallery
- Cinema
- Community Library
- Pulse Fitness Gym
- Indoor and Outdoor Pools
- Tennis and Squash Courts
- Community Youth Centre

(08) 8671 0500 | info@roxbylink.com.au | www.roxbydowns.sa.gov.au

Roxby Downs Visitor Information Centre

- Tour Bookings
- Brochures & Maps
- Souvenirs
- Outback Road Conditions
- Olympic Dam Video Presentation
- Community Information
- WiFi

1-15 Richardson Place, Roxby Downs
P: 08 8671 5941
E: vic@roxbylink.com.au

South Australia's state floral emblem, the beautiful Sturt Desert Pea.

BHP Olympic Dam mine site with a colourful Outback Sunset

WARDLE Co.
Real Estate

Real Estate Sales & Property Management
(08) 8671 2023
wardleco.com.au

Your Local Real Estate Specialists

Roxby Community Library

Computer Access • WiFi • Printing • Scanning • Copying • Community Programs

Roxbylink Complex
Richardson Place,
Roxby Downs SA
Phone: (08) 8671 0500

ROXBY DOWNS WILDLIFE HOTLINE
0497 808 315

A variety of native wildlife live in and around Roxby Downs. If you come across an injured animal or you see a snake on your property you can contact the Roxby Downs Wildlife Hotline for volunteer assistance.

The Wildlife Hotline is a wildlife awareness initiative of the Roxby Downs Environment Forum supported by BHP.

SCAN ME

Scan this QR code to jump straight to our Visitor Information Centre Website.

ampm bp

- Fuel & Auto Gas
- ATM
- Mobile Ph Prepaid
- Barista Coffee
- Trailer Hire
- Ice
- Fast Food & Groceries
- Automotive & More

OPEN 7 DAYS 5am - 12am
BP ROXBY DOWNS
26 Olympic Way, Roxby Downs
Ph 08 8419 4683

RED DESERT CLEANING SERVICES PTY LTD

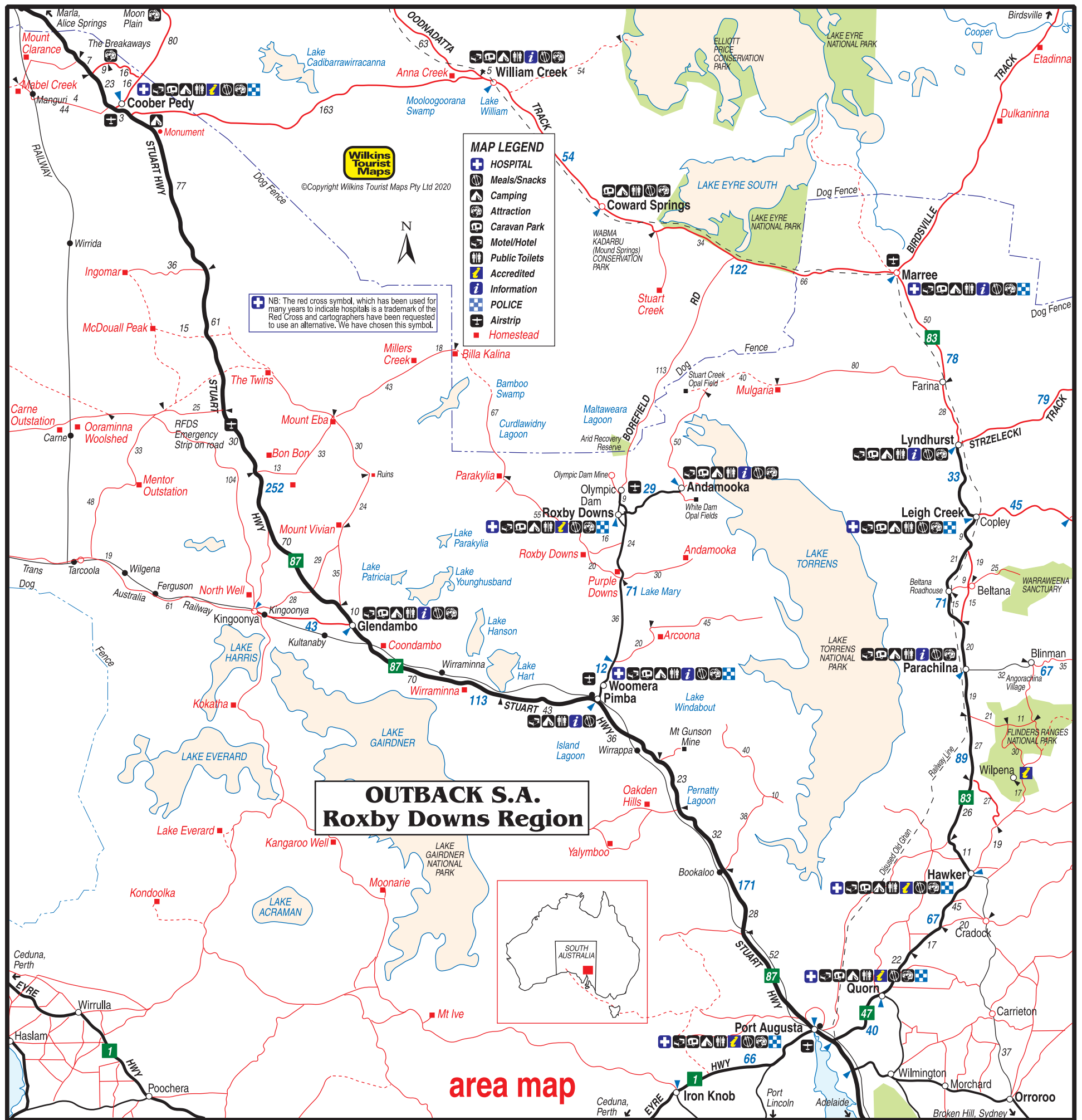
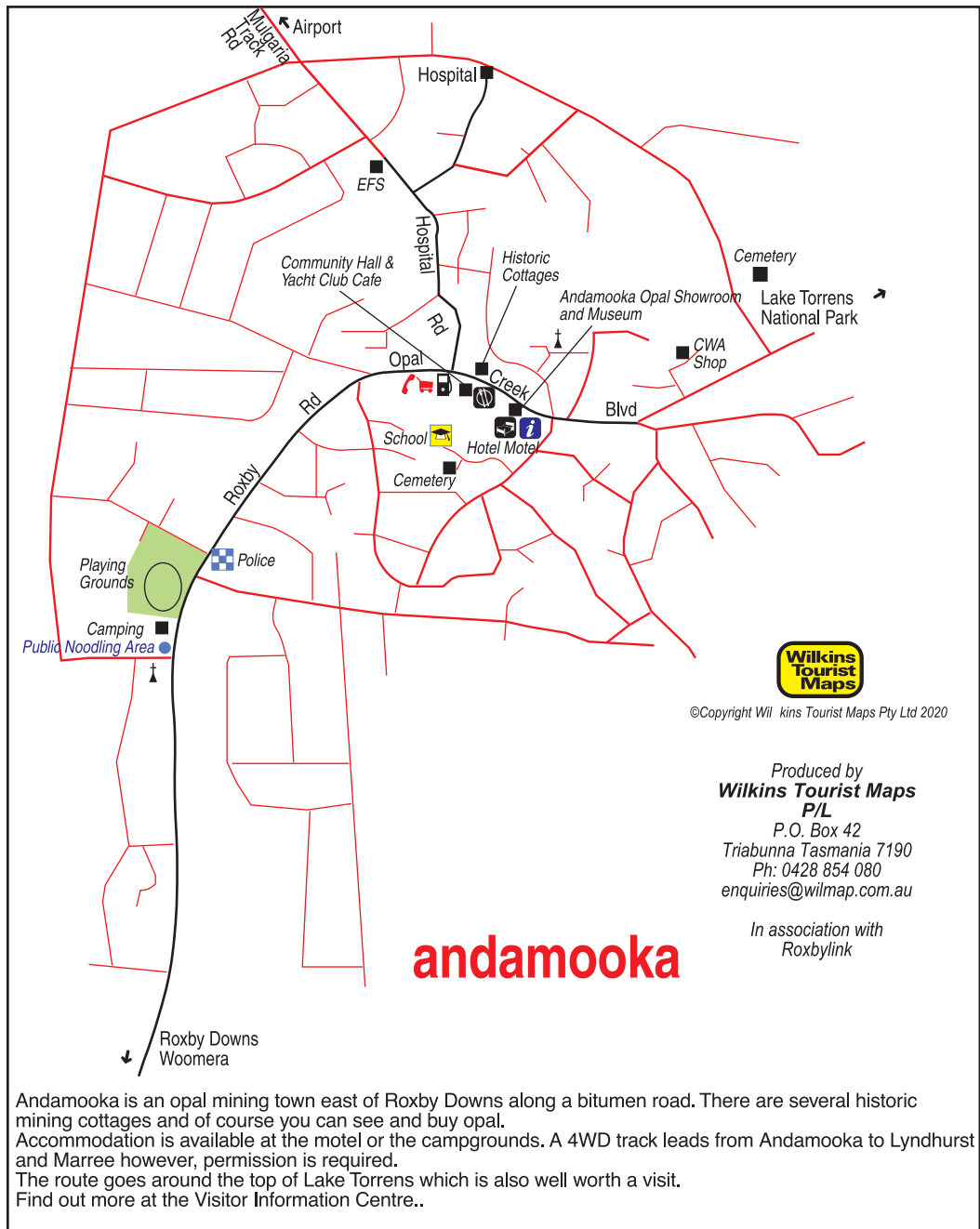
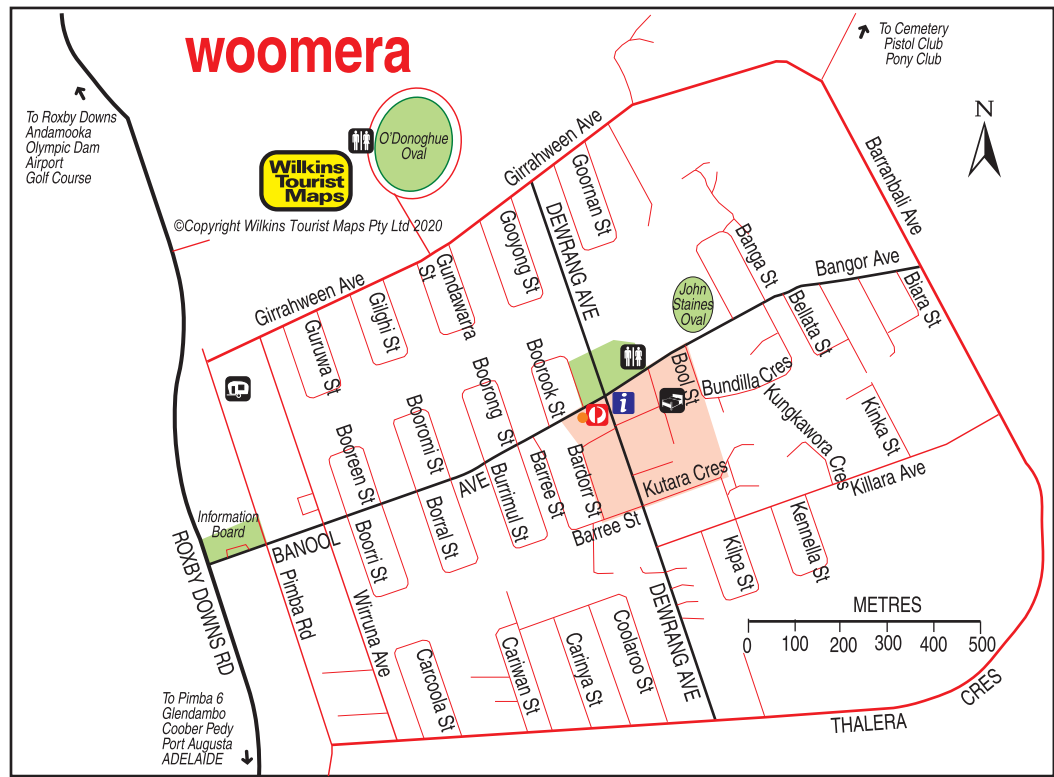
Carl 0428 678 837
Sharron 0427 028 452

FREE QUOTES FULLY INSURED FULLY GUARANTEED

*General Cleaning *Window Cleaning * Carpet Cleaning
*Upholstery Cleaning *Spring Cleans * Entry & Exit Cleans
*Domestic / Commercial Cleaning

Wilkins Tourist Maps

You can view this and other maps of South Australia and Australia on our website at <http://www.wilmap.com.au>



OUTBACK TRAVEL: Many roads in the outback are substandard and can be affected by rain and other elements. Please be sure you have adequate supplies of water, food, spare parts, and that you notify some responsible person of your intended route and arrival time at your destination. Call them when you arrive! In many places there are considerable distances between fuel stops and you should check how far to the next stop. Do not leave main roads for any distance unless you know where you are going. If in trouble, find shelter and remain with your vehicle. Most tracks in the outback are used at least daily. Mobile phones do not work in the outback except in some major centres. Do not rely on your phone unless it is a satellite phone. If you are stuck and hear a search plane, burning a tyre will create a lot of smoke. Pieces of a broken side mirror placed around a mound of dirt will reflect light from many directions and may help someone find you. Carry spare fan belts, an additional tyre and rim, extra fuel and oil, and plenty of water.